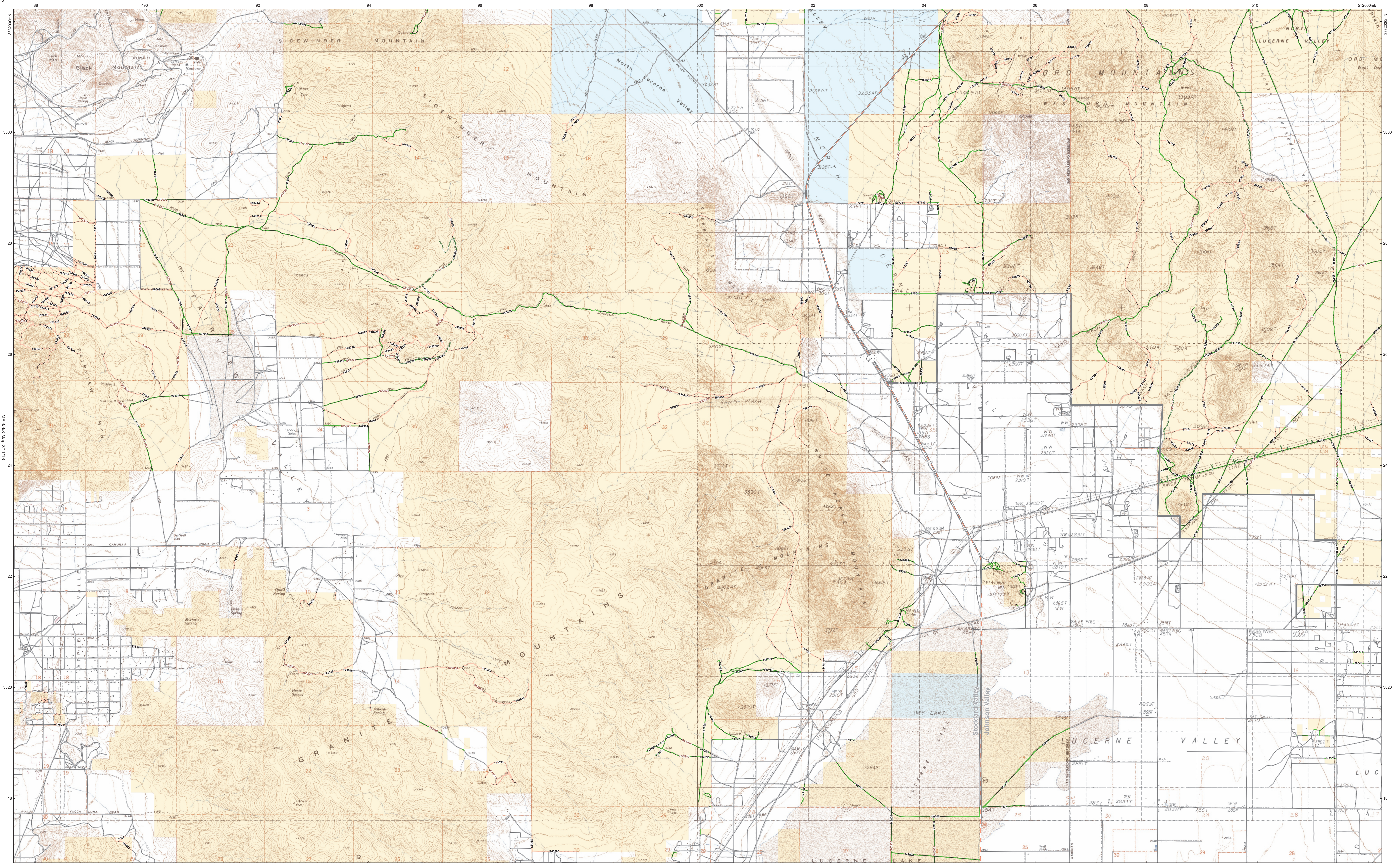


# Western Mojave Travel Management Plan Draft Environmental Impact Statement

## Travel Management Area 8 - Map 14 of 22

December 2014  
Fairview Valley, White Horse Mountain 7.5 Minute Topographic Maps



Coordinate System: Universal Transverse Mercator (UTM) NAD83/WGS84

- |  |   |  |
|--|---|--|
| <p><b>Route Designation</b></p> <ul style="list-style-type: none"> <li><span style="color: green;">—</span> Motorized</li> <li><span style="color: blue;">—</span> Non-motorized</li> <li><span style="color: purple;">—</span> Non-mechanized</li> <li><span style="color: green;">—</span> Administrative/Authorized Use Only</li> <li><span style="color: orange;">—</span> Transportation Linear Disturbance</li> <li><span style="color: grey;">—</span> Non-BLM*</li> <li><span style="color: grey;">—</span> Route with Subdesignation</li> <li><span style="border: 1px solid black; display: inline-block; width: 10px; height: 10px;"></span> WEMO Planning Area</li> <li><span style="border: 1px solid black; display: inline-block; width: 10px; height: 10px;"></span> WEMO Travel Management Area</li> <li><span style="border: 1px solid black; display: inline-block; width: 10px; height: 10px;"></span> WEMO Subregion</li> <li><span style="border: 1px solid black; display: inline-block; width: 10px; height: 10px;"></span> BLM Field Office Boundary</li> </ul> | <p><b>Land Ownership</b></p> <ul style="list-style-type: none"> <li><span style="background-color: yellow; border: 1px solid black; display: inline-block; width: 10px; height: 10px;"></span> Bureau of Land Management</li> <li><span style="background-color: lightblue; border: 1px solid black; display: inline-block; width: 10px; height: 10px;"></span> State</li> <li><span style="background-color: white; border: 1px solid black; display: inline-block; width: 10px; height: 10px;"></span> Private</li> </ul> | <p><b>Resource Data</b></p> <ul style="list-style-type: none"> <li><span style="border: 1px solid orange; display: inline-block; width: 10px; height: 10px;"></span> Area within 1/4 mile of a sensitive receptor</li> <li><span style="border: 1px solid yellow; display: inline-block; width: 10px; height: 10px;"></span> Area within 1 mile of a sensitive receptor</li> <li><span style="border: 1px solid grey; display: inline-block; width: 10px; height: 10px;"></span> Residential Area</li> <li><span style="border: 1px solid red; display: inline-block; width: 10px; height: 10px;"></span> Area of Critical Environmental Concern</li> <li><span style="border: 1px solid brown; display: inline-block; width: 10px; height: 10px;"></span> Active Grazing Allotment</li> </ul> |
| <p><b>Resource Data (Cont.)</b></p> <ul style="list-style-type: none"> <li><span style="border: 1px solid orange; display: inline-block; width: 10px; height: 10px;"></span> Desert Linkage Network</li> <li><span style="border: 1px solid yellow; display: inline-block; width: 10px; height: 10px;"></span> Area Prone to Erosion Due to Slopes Greater than 10 Percent</li> </ul>  | <p><b>Air Quality Management Districts</b></p> <ul style="list-style-type: none"> <li><span style="border: 1px solid orange; display: inline-block; width: 10px; height: 10px;"></span> Mojave Desert</li> <li><span style="border: 1px solid blue; display: inline-block; width: 10px; height: 10px;"></span> South Coast</li> </ul>   | <p><b>California Air Basins</b></p> <ul style="list-style-type: none"> <li><span style="border: 1px solid orange; display: inline-block; width: 10px; height: 10px;"></span> Mojave Desert</li> </ul>  |
| <p><b>Unusual Plant Assemblage</b></p> <ul style="list-style-type: none"> <li><span style="border: 1px solid orange; display: inline-block; width: 10px; height: 10px;"></span> Johnson Valley/ Lucerne Valley Creosote bush Clones</li> </ul>   |   |  |

\*Route Designations apply to those routes found on BLM administered Public Lands only. Routes shown on non-BLM administered lands are for reference purposes only.



**US Department of the Interior  
Bureau of Land Management**  
California Desert District, Barstow Field Office,  
Ridgecrest Field Office, Needles Field Office,  
Palm Springs Field Office  
cawemopa@blm.gov  
Developed October 2014 by PMLM/BR

The Bureau of Land Management makes no representations or warranties regarding the accuracy or completeness of this map. The Bureau of Land Management shall not be liable under any circumstances for any direct, indirect, special, incidental or consequential damages with respect to any claim by any user or any third party on account of, or arising from, the use of this map or the data from which it was derived.

When differences in accuracies between routes and roads shown on the USGS topographic base map occur, the base map should be considered less accurate.

